

Chocobo by Sane Person

instructions

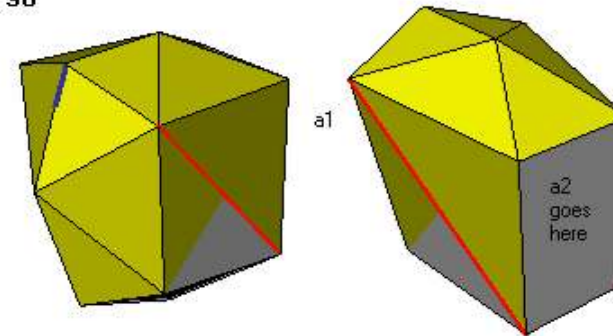
Part listing:

a - body
b - right leg
c - left leg
d - right wing
e - left wing
f - neck
g - head
unlabeled - claws, 2D hair-like yellow thingies, big hair-like yellow thingies, tail

Some info:

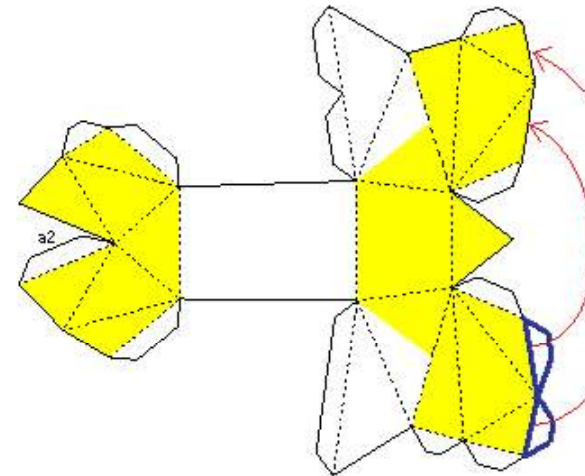
> I didn't bother with some instructions, the Chocobo is easy to make

Torso



The tail:

1. The blue line denotes where it goes.
2. Squeeze one end of the tail and slide it into the denoted area. Apply some glue on the inside.

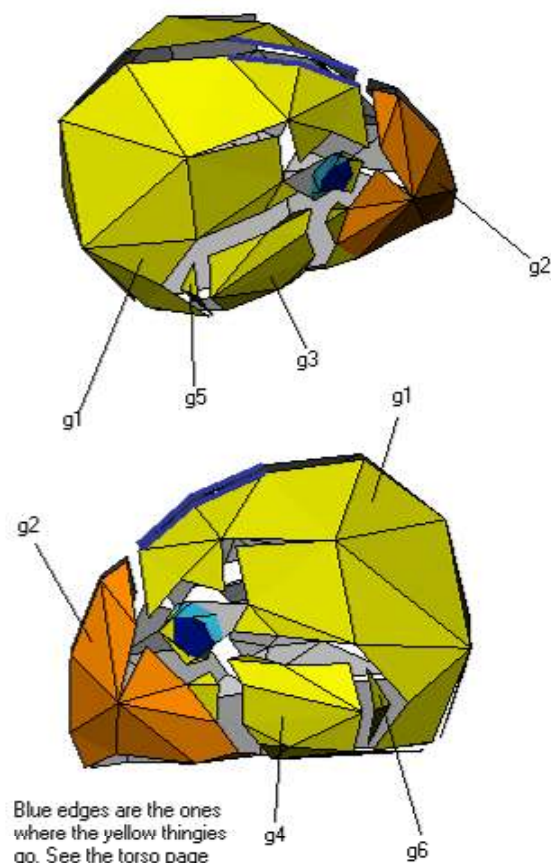


Attaching the front little yellow thingies:

One way is to cut the tabs that are shown. Then glue the little yellow guys back to back and use their tabs to connect the faces.

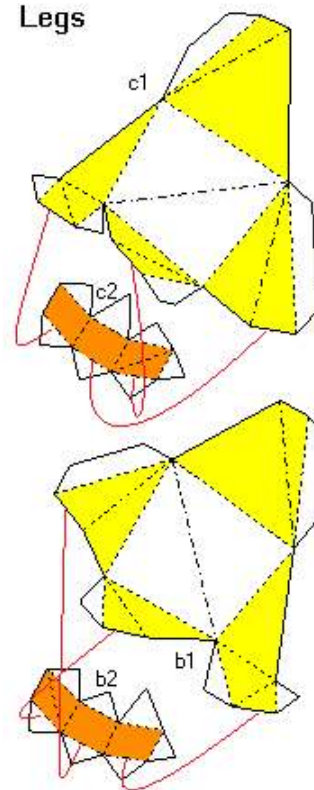
Another way is to proceed with a2, then remove tabs from the little yellow things and glue them on the very edge.

Head



Blue edges are the ones where the yellow thingies go. See the torso page for more info.

Legs



The feet are not symmetric, I had to sacrifice symmetry to fit the parts on the pages.

The small claws are that rear ones.